

CRP x CLFQP

CRP - Programme Overviews

July 2023





About Cross River Partnership

Cross River Partnership (CRP) is a partnership delivering environmental, economic and community-focused projects. We support public, private and voluntary organisations to creatively address challenges around air quality, transport, placemaking and wellbeing.



Clean Air Logistics for London (CALL)

1. Pier Adaptions & Facilities
2. Vessels & Charging Infrastructure
3. River Trials & Onward Journeys
4. Micro Hub Development & Transport Analysis
5. Communications & Media



River Freight Trials

London Light Freight River Trial

- 4-week trial running from 27th February – 24th March
- Goods transported daily from DIFT to Bankside via Trinity Buoy Wharf and cargo bikes and EVs used for last-mile
- First river freight trial to incorporate returns
- 561 cargo bike deliveries and 40 EV deliveries
- 92% savings in NOx and 96% savings in CO2

River Freight Pilot Part 2 – Scaling Up

- River freight trial focuses on using the river for the bulk delivery of goods
- 6 month trial beginning in April (3 deliveries so far)
- CPBS Marine vessel operator transporting goods (Antalis, Mayflower and Complete) from Woolwich Royal Arsenal Pier to Temple Pier on a monthly basis.
- Cargo bikes transporting goods to final destinations





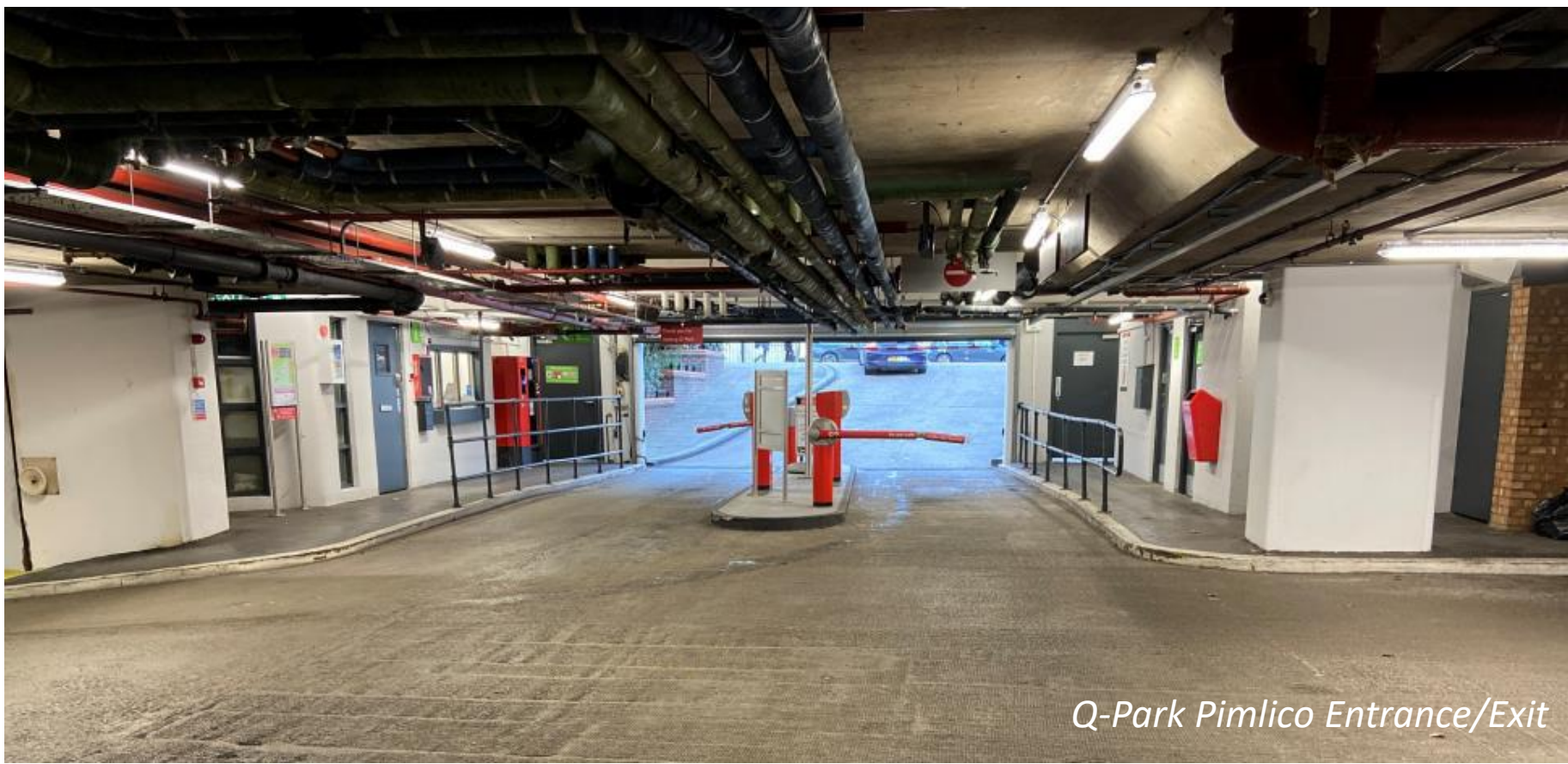
Logistics Hub Trials / Studies

Waterloo Hub

- Following the [On Track for Sustainable Logistics](#) report, CRP are continuing to develop the potential for a freight hub at Waterloo.
- Waterloo has shown a significant amount of underutilised space and CRP have commissioned 4 studies to explore the potential of this hub for improving air quality when serviced different inbound freight flows, different occupiers and different outbound delivery flows.

WCC Pimlico Logistics Hub

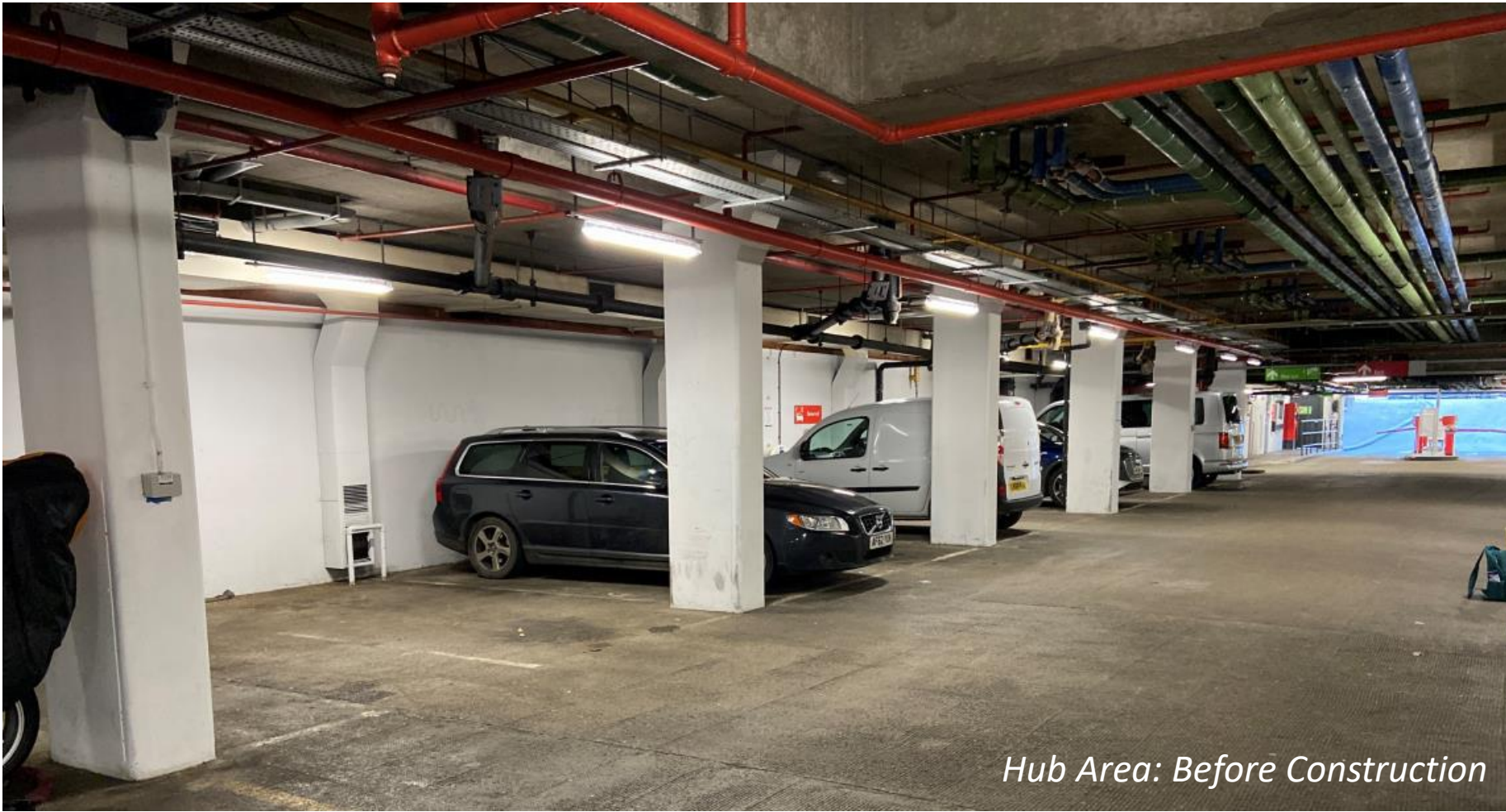
- The 6-month trial started on 17th April and will run until the end of September
- You can find the official press release on our website
- We will be gathering operational and emissions data as well as general insights from Delivery Mates, the selected low-emission couriers, and sharing all of these in a final report after the trial ends



Q-Park Pimlico Entrance/Exit



Hub Area: After Construction



Hub Area: Before Construction

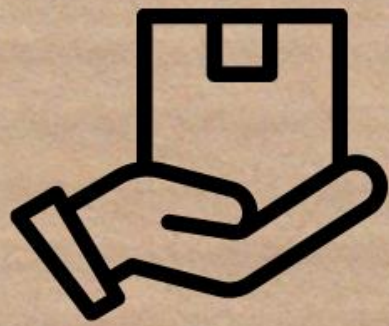


Hub Area: After Construction

PIMLICO MICRO LOGISTICS HUB TRIAL

MONTH 1 INSIGHTS

170



parcels
transported via
the hub on
average per day

722



km of cargo
bike
deliveries
from the
micro logistics
hub

91%



reduction of
CO2
emissions in
the first
month

PIMLICO MICRO LOGISTICS HUB TRIAL

MONTH 2 INSIGHTS

13



cargo bikes
delivering
parcels
from the
hub on
average

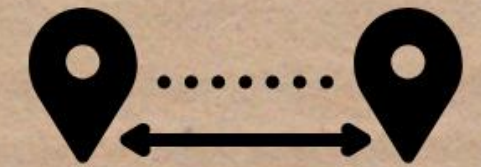
4



of those e-
cargo bikes
being
charged at
the hub
overnight

47

%



increase in
total cargo
bike
distances
travelled

Cargo Bike & Walking Freight Trials

London Light Freight Walking Trial

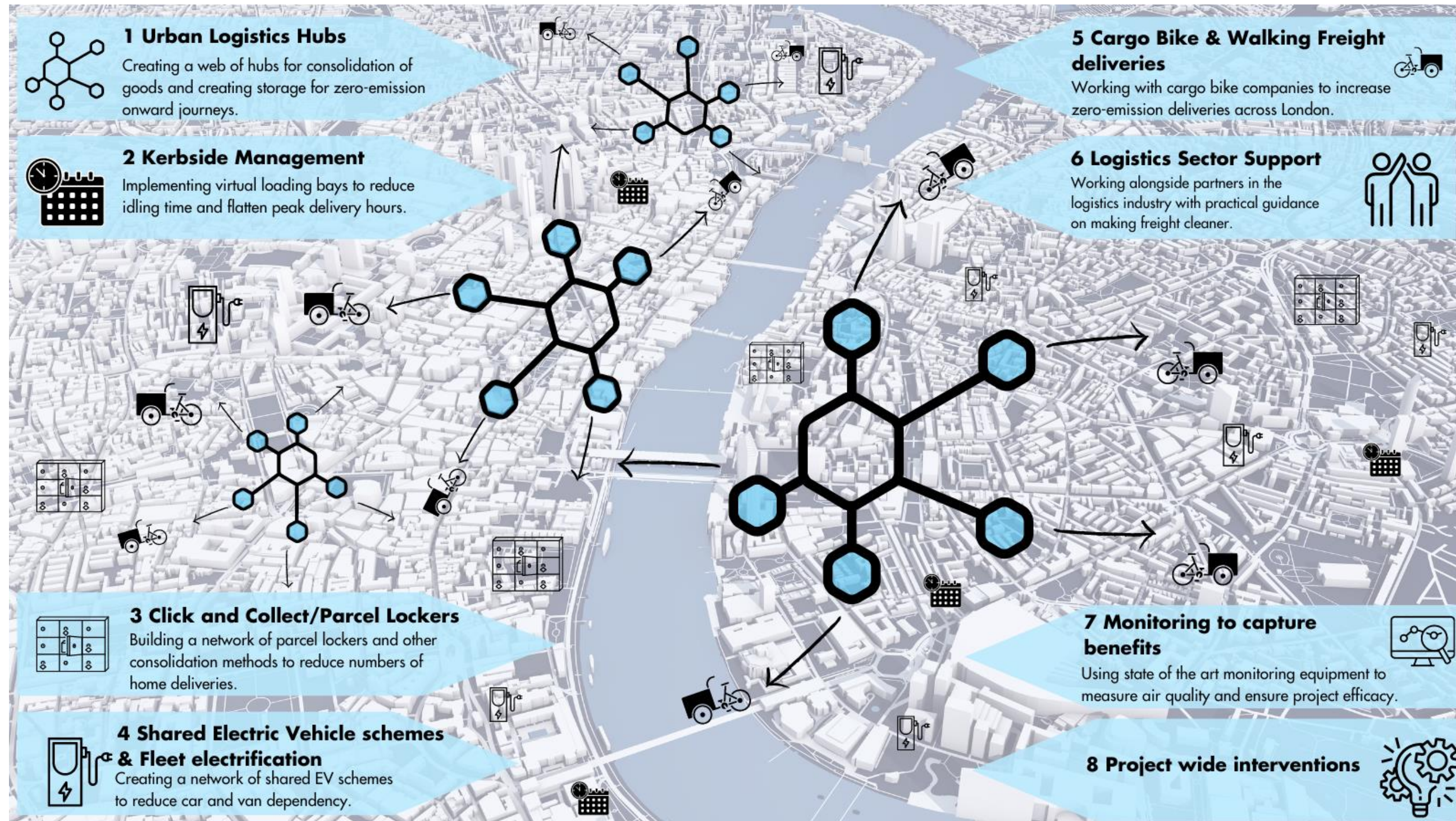
- CRP has been working with The Fitzrovia Partnership, London Borough of Camden, UPS and Heal's to bring this trial to life, which officially began on Friday 5th May.
- The trial serves last-mile deliveries and will support the reduction of emissions and congestion.
- Is the first walking freight trial on public land.

Our Bike Scheme

- Rolling out network of our bikes in partnership with Peddle My Wheels and London Borough of Islington.
- Bikes being delivered to host businesses next week.
- Will support businesses to make cargo bike deliveries in the Highbury area.



Smarter Greener Logistics



The Smarter Greener Logistics (SGL) Project will reduce harmful NO₂ emissions from freight movements in central London. SGL will support a network of Urban Logistics Hubs that are serviced by Low Emission Last Mile Deliveries.

Each of the Logistics Elements are mutually re-enforcing in terms of their contributions to improving Air Quality.

Smarter Greener Logistics

Proposed Partners

- Local Authorities

1 Westminster City Council

2 City of London Corporation

3 London Borough of Camden

4 London Borough of Ealing

5 London Borough of Hackney

6 London Borough of Hammersmith & Fulham

7 London Borough of Islington

8 London Borough of Lambeth

9 London Borough of Lewisham

10 London Borough of Merton

11 London Borough of Richmond upon Thames

12 London Borough of Southwark

13 London Borough of Tower Hamlets

14 London Borough of Wandsworth


15 Royal Borough of Kensington & Chelsea
- BIDs

16 Better Bankside


17 Brixton BID

18 Northbank BID


19 Team London Bridge
- Strategic Organisations




20 ecofleet




21 EMSOL




22 Liberty Charge




23 Port of London Authority



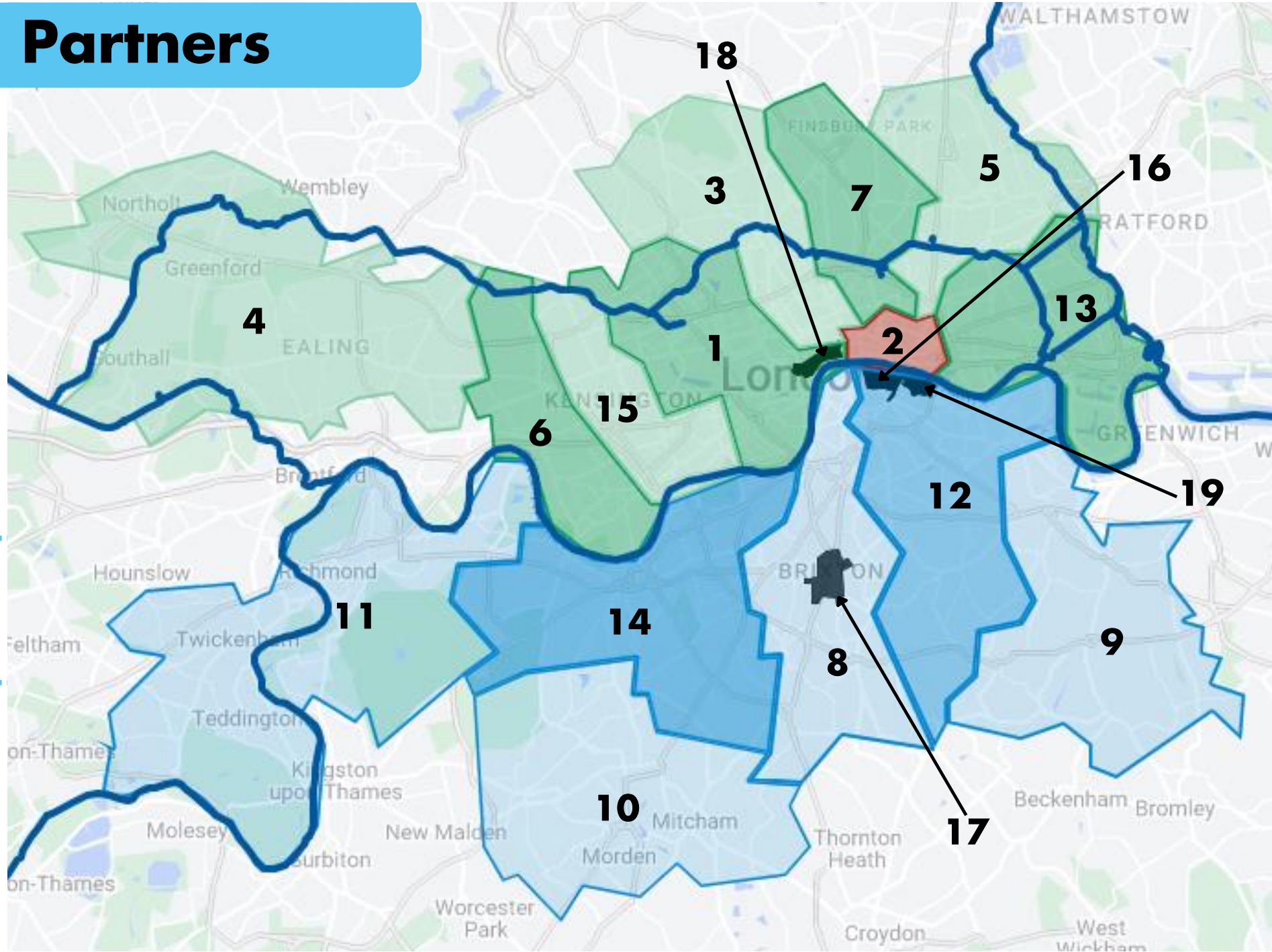
24 Transport for London



25 Wood Hall & Heward Barges



26 Zedify



Improvements will be delivered across 15 London boroughs and four London Business Improvement Districts (BIDs).

SGL will build on the success of CRP’s Clean Air Logistics for London (CALL).

Currently meeting with partners to discuss priorities and deliverables for SGL programme.

Contact Us

Fiona Coull (Senior Programme Manager): fionacoull@crossriverpartnership.org



www.crossriverpartnership.org/newsletter



crp@crossriverpartnership.org



07966 201 695



[@CrossRiverPship](https://twitter.com/CrossRiverPship)



[Cross River Partnership](https://www.linkedin.com/company/cross-river-partnership)



[@CrossRiverPartnership](https://www.instagram.com/CrossRiverPartnership)



[Cross River Partnership](https://www.facebook.com/CrossRiverPartnership)



[CRP YouTube Channel](https://www.youtube.com/channel/UC...)