

LAMBETH COUNCIL

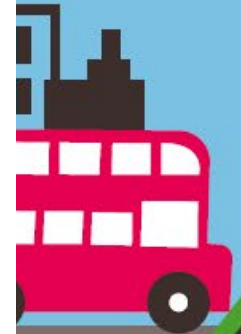
KERBSIDE STRATEGY

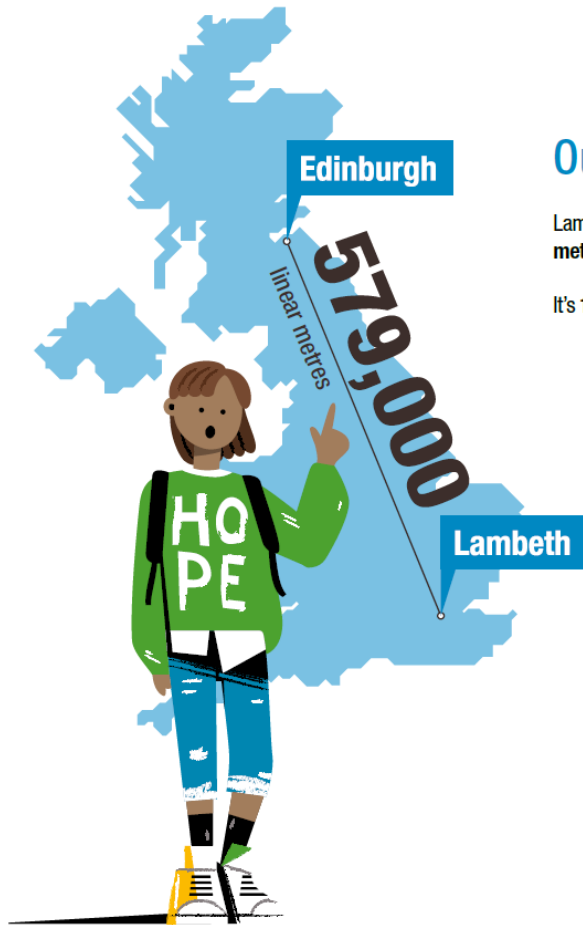
Rebalancing priorities for Lambeth streets



60% of households in Lambeth do not have access to a car

**That's over 81,000 households,
or 190,000 residents**





Our kerbside in numbers

Lambeth's kerbside stretches an impressive **579,000 linear metres** - that's the same distance from Lambeth to Edinburgh.

It's **1,158,000m²** and **291 acres**. That's the same as:

3.5

Brockwell parks



or

51,467

London buses lined up



WHERE ARE WE NOW?

LAMBETH'S KERBSIDE IN 2022

% of Lambeth
Kerbside

46%

Parking

ONLY 6%

Sustainable uses of the kerbside:

- SuDs, street trees
- Community and business parklets
- Cycle lanes
- Pedestrian Crossings
- Bus lanes and bus stops
- Shared Scooter / Bike Bay
- Car Club Bay
- EV Bay
- School Keep Clear
- Taxi Bay
- Cycle Hangars
- Loading & disabled bays

24%

Double yellow lines

15%

Single yellow lines

9%

Driveways



What other teams said...



Children Services
Fostering team

"Create spaces to take children out to play, to be free. Space for everyone to creating bonds."



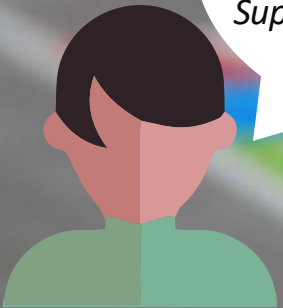
Integrated Health and Adult's Care
Public Health team

Space for: "physical activity, active travel, community space, cleaning of the air. Places to sit."



Children Services
Social Care team

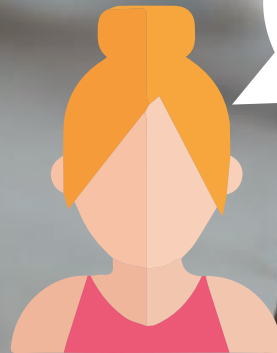
"Space that would be set as a safe space for children."



Integrated Health and Adult's Care

Adult's Placement Support Team

Space for: "young people, play facilities, games, table tennis, chess, dominoes. Supporting intergenerational connections."



Resident Services
Asset Management Team

"Green spaces, food growing, meeting areas, collaboration spaces, outdoor exercise..."



Sustainable Growth & Opportunity
Regeneration Team

"Allows businesses to expand on the street and trade in a different way. Ownership of public realm Visual enhancement."



Introducing *Lambeth Kerbside Basics*

*Minimum levels of service for every street in
Lambeth, set against 4 priorities*

PRIORITY ONE

Enable accessible and active travel



INCLUSIVE DESIGN IN PRACTICE



Lambeth Kerbside Basic

“Secure cycle parking every 100m on every street”

“Street trees, wheely bins and crossover are not a barrier to everyday, accessible walking and wheeling”



196	250
N2	N250

PRIORITY TWO

Create places for people





Lambeth Kerbside Basic

“Every resident has the opportunity to apply for a parklet”

“...support the creation of outdoor, green and social spaces in area with both socioeconomic and green space deprivation”

PRIORITY THREE

increase our resilience
to climate change





Lambeth Kerbside Basic

“a tree every 25m on every Lambeth street enabled by the kerbside”

“Permeable surfaces including depaving, greening, wildflowers and sustainable drainage make up 10% of Lambeth kerbside”

PRIORITY FOUR

Reduce traffic and
emissions from transport






Lambeth Kerbside Basic

“Full electric car club vehicles on every street in Lambeth”

“All local high streets have access to a shared electric van”



Kerbside Pricing Principles

1). If your vehicle produces more greenhouse gases than a car

2). If your

3). If your v

Lambeth Kerbside Basic

“Controlled parking zones operate across the whole of Lambeth”

“Parking fees are set in accordance with the kerbside pricing principles”



Low cost or free

High cost