

London Lorry Control Scheme Freight Policy Advisory Panel 16 October 2019

Spencer Palmer
Director, Transport and Mobility

About London Councils

- Cross-party organisation
- Represents London's 32 borough councils and the City of London
- Lobby Mayor and Government
- Run London-wide services
- Develop and deliver policy
- Manage networks and share guidance
- Have some statutory roles

London Councils' Key Themes

- Transport and Environment
- Housing
- Leadership, devolution and democracy
- Crime and public protection
- Funding for London
- New ways of working
- Supporting business and inclusive growth
- Better Health and Care

London's Boroughs

- 33 Authorities
- Wide ranging responsibilities
- Including traffic management
- 95% of London's roads



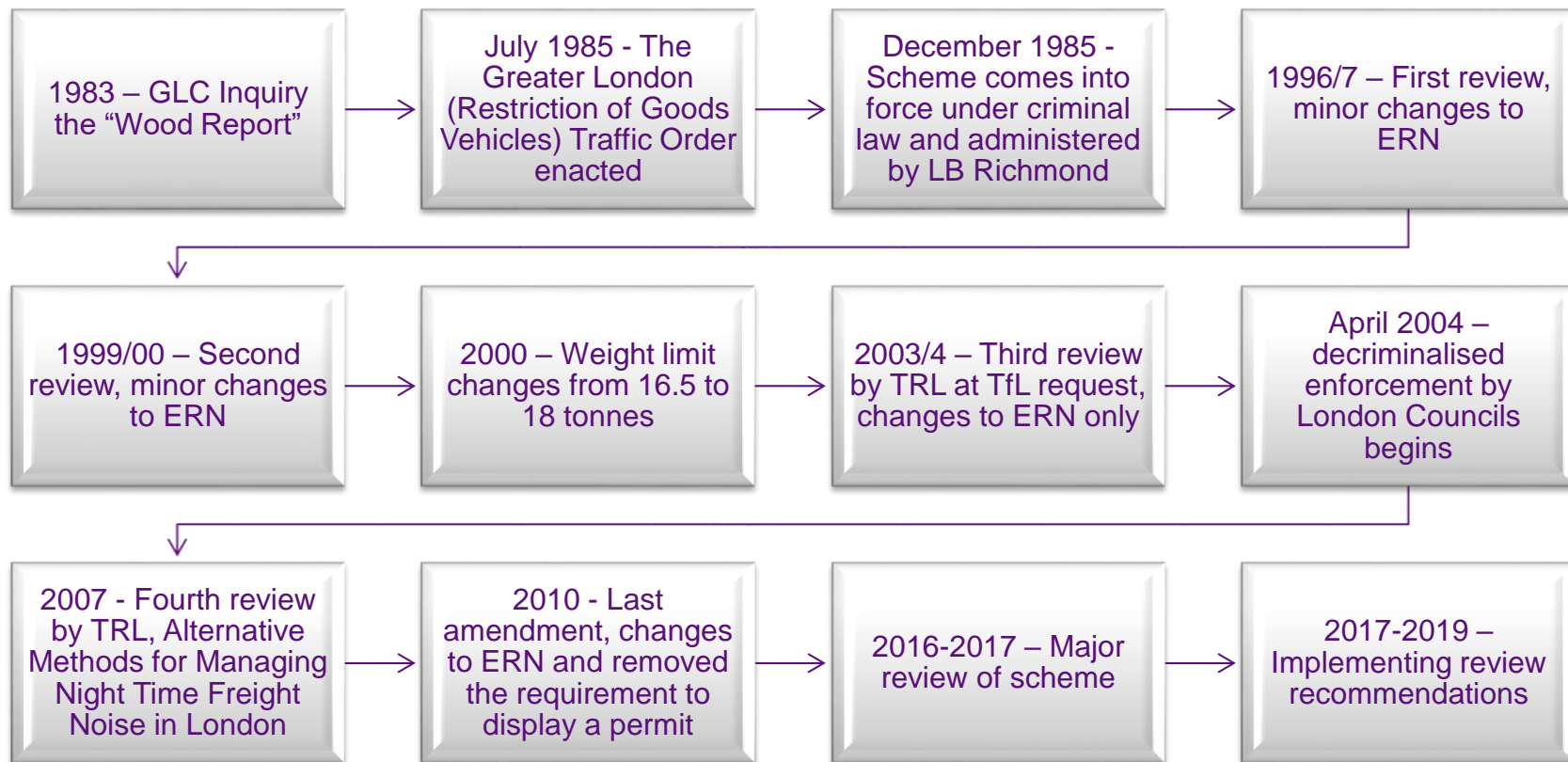
The London Lorry Control Scheme

- Not a Lorry Ban
- Not designed to prevent deliveries/collections at any time – just control the routes that are used
- Helps manage noise nuisance within the M25
- In operation for over 30 years

Restrictions and Network

- Excluded Route Network (ERN) - travel at any time without permission
- Restricted Roads - Vehicles over 18 tonnes need permission to use restricted roads during the hours of control:
 - Monday - Friday: 9pm - 7am (including 9pm Friday night to 7am Saturday morning)
 - Saturday: 1pm - 7am Monday morning
- Must adhere to rules of the scheme

History of the London Lorry Control Scheme



LLCS Review

- First major detailed review in the history of the scheme
- Excellent engagement from all key stakeholders
- Comprehensive set of recommendations
- No recommendation to scrap the scheme – still beneficial in protecting Londoners and controlling movement
- Aware that it is not always popular with everyone

Review Recommendations

- Four key areas:
 - Communication
 - Administration
 - Technology
 - Enforcement
- Short, Medium and Long Term recommendations

Communications Progress

- Reviewed and Updated the Website
- Revised the Terms and Conditions
- Created a suite for Frequently Asked Questions
- Provided website links for freight and key stakeholders
- Developing clearer branding
- General better engagement and contact with industry

Administration Progress

Interactive Haulier Portal

- 24 hour access, view and manage accounts, evidence submission, payments, communication options, look up outstanding cases and status

Five Year Permissions

- Previously three years, decrease in administration, full autonomy for haulier account, automated email renewal reminders (60 days before expiry)

New Case Management System

- All non-statutory documents sent via email, all correspondence viewable via Haulier Portal, improved response times, improved reporting and compliance data, creation of 'hotlist' reducing the need to send Enquiry Letters.

Technology Progress

- ANPR Pilot - April - July 2019
- Engagement with Noise Abatement Society and City of London and City of Manchester to investigate the possibility of a Noise Standard and noise monitoring technology
- Engagement with ANPR specialists to determine whether technology can be adapted to measure transient noise
- Interactive LLCS 'zoomable' map is fully functional on the website
- LLCS data shared with TfL for Open Source Data
- Preliminary discussions with a service provider to create a routing tool

Enforcement Progress

Consultant (Project Centre) contracted to progress longer-term recommendations:

- Traffic signs
- Hours of control
- Weight limits and exemptions
- Excluded route network
- Amalgamation of lorry schemes (communications)



Recommendations leading to pilot projects

Traffic signs

- 1800 signs across London
- They convey the details of the restriction to drivers
- Linked to the traffic management order
- Enable enforcement



Hours of control

Existing operational hours

LLCS in operation	00:00	01:00	02:00	03:00	04:00	05:00	06:00	07:00	08:00	09:00	10:00	11:00	12:00	13:00	14:00	15:00	16:00	17:00	18:00	19:00	20:00	21:00	22:00	23:00
LLCS not in operation																								
Monday																								
Tuesday																								
Wednesday																								
Thursday																								
Friday																								
Saturday																								
Sunday																								
Normal restrictions apply on public and bank holidays																								

Review to include

- If change should be made?
- Impact of change? Risks and benefits
- Whether a pilot study with revised hours should be undertaken
- How the pilot will be monitored

Weight limit / exemptions

Review will:

- Assess the current weight limit
- Consider what has changed
- Look at options to increase fairness
- How could it be changed

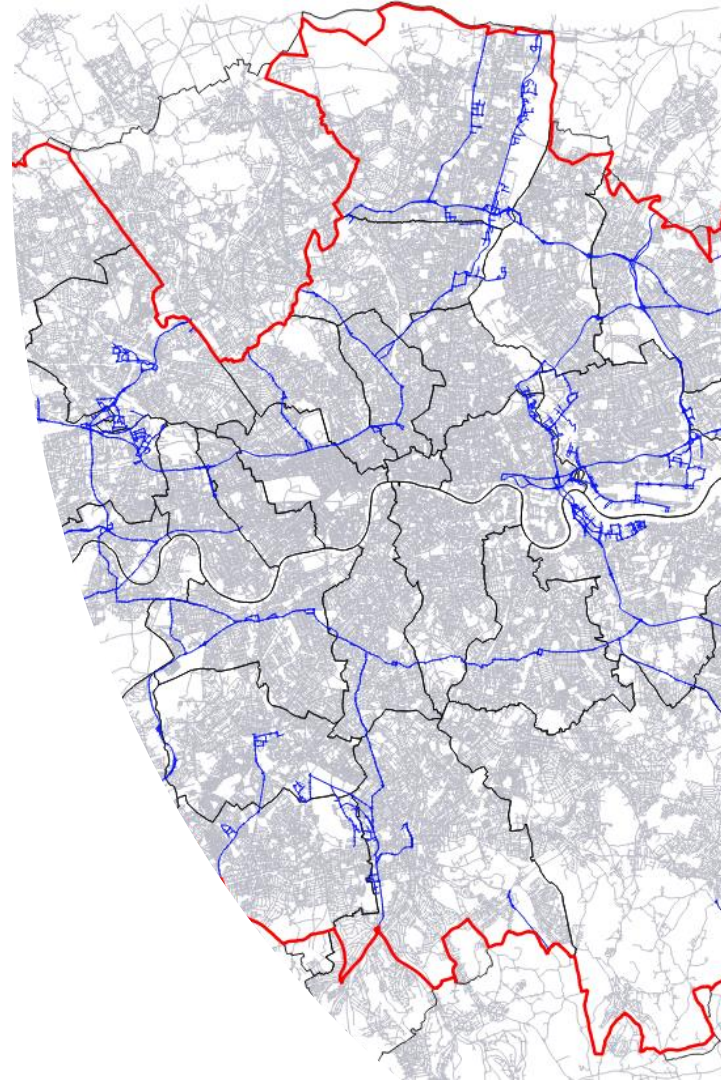


ERN

- 450 miles of ERN
- 95% of roads are restricted during operational hours

Review will:

- Consider if changes are required
- Ensure that mapping is up to date



Amalgamation

- Other lorry management schemes in London with different objectives and agendas – DVS using LLCS Order
- Rules associated with these schemes vary
- Task is to investigate how these schemes including the LLCS can be communicated better – perhaps a ‘one-stop shop’ website or communication platform for all operators/hauliers can look at

Project timeline

- ✓ July 2019 - project start, project planning and information gathering
- ✓ August 2019 - Working Group Meeting
- October 2019 - draft report on potential recommendations and pilot projects
- November 2019 – Working Group update
- December 2019 – Report to London Councils TEC to agree next steps
- 2020 – pilot projects to commence

Thank you

Spencer Palmer

Director, Transport and Mobility

London Councils

spencer.palmer@londoncouncils.gov.uk